



Ch

62

LIBRARY
RECEIVED
★ FEB 26 1958 ★
U.S. Department of Agriculture

310

1958

Mums from Minnesota

THE LEHMAN GARDENS
FARIBAULT, MINNESOTA



HILITE (Yellow). 75c each; 3 for \$2.00
EARLY CRIMSON (Red). 60c each; 3 for \$1.50



PURPLE WATERS. 75c each; 3 for \$2.00

5 ARRANGEMENT COLLECTION

All five varieties are extremely good for arrangements.

5 SURE-TO-BLOOM
 PLANTS

\$3.10

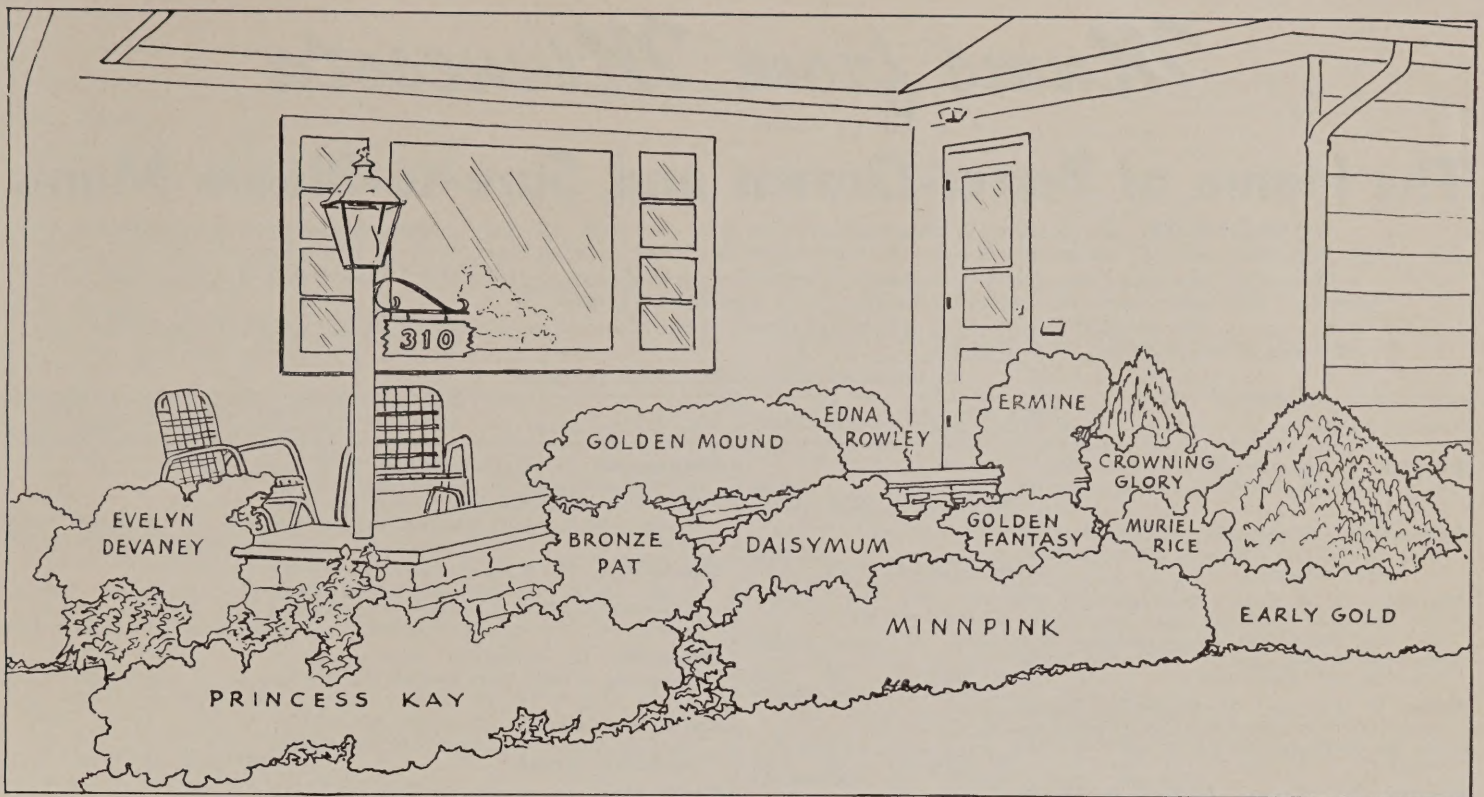
(1 of each pictured)

DAISYMUM. 75c each; 3 for \$2.00



BRONZE GIANT. 75c each; 3 for \$2.00





Cover Picture: Patio at the Home of Mr. and Mrs. Roger F. Koopmans, Faribault, Minn.

Patio Mum Collection

A SELECTION OF MUMS USED IN THIS DELIGHTFUL PATIO PLANTING

12 PLANTS (one of each pictured) . . . **\$6.50**

36 PLANTS (three of each pictured) . **\$17.50**

"Princess Kay of the Milky Way." The Minnesota Dairy Princess



Mums from Minnesota

The Home of Better-Grown and Sure-to-Bloom Mums

WE SPECIALIZE. We grow only Garden Mums and we grow them well. Our very modern establishment is located in southern Minnesota and has been built especially for the growing of better Garden Mums.

Dependable blooming dates, descriptions and growth data are recorded each year from actual observations in our own test gardens. This enables us to offer only the newest and most dependable varieties.

You can be sure of better-grown, better-packed and sure-to-bloom Mums when you order from us. Plants will be ready and available from February 15 to June 15.

D., Double; SD., Semi-double; S., Single; SP., Spoon

Name and Description	Height in Inches	Blooming Date	Price Each	Price Per 3	Name and Description	Height in Inches	Blooming Date	Price Each	Price Per 3
Admiral. D. Pictured p. 19. Rich velvety dark red that is glorious for cutting or garden display.	30	Oct. 5	\$0.75	\$2.00	Champagne. D. (Lehman.) New 1958! An entirely new color in Mums—could be described as ivory-shell-pink. Large bloom on strong, well-branched plants. An exquisite color.	36	Sept. 28	\$1.00	\$2.50
Admiration. D. (Bristol.) Pictured p. 17. Large flowers in a medley of gleaming peach and bronzy salmon.	26	Sept. 24	.75	2.00	Charles Nye. D. (Kraus.) Pictured p. 13, 19. Large, 3-inch, fully double, rounded flowers of buttercup-yellow. Excellent. The standard by which all other yellows are judged.	28	Sept. 28	.50	1.25
Adorable. D. (Lehman.) Pictured p. 11, 27. This new pink has everything: large flower, early and dependable bloom, gorgeous color and breathtaking beauty. Color clear bright rose-pink with salmon reverse.	20	Sept. 15	.75	2.00	Chippewa. D. (Longley.) Pictured p. 11. Gorgeous, bright aster-purple, slightly incurved. Does well in the North.	24	Sept. 4	.50	1.25
Aglow. D. (Lehman.) The nearest true orange-colored Mum to date. Quilled petals add to its charm. Early, free flowering; splendid plant habits.	24	Sept. 17	.60	1.50	Chris Columbus. D. (Rosebud.) A most outstanding ivory-white. Luxuriant growth; unexcelled for cutting.	26	Sept. 28	.60	1.50
Apache. D. (Kraus.) Pictured p. 13, 15. Orient-red to dark brilliant fire-cracker-red with golden overcast. Quilled petals. Very tough, weather-resistant flowers, 4 to 5 inches in diameter. In bloom from mid-September to November.	24	Sept. 15	.75	2.00	Companion. D. (Lehman.) Pictured p. 27. Reliable early-blooming, fully double golden bronze. A grand companion to the darker Early Kathleen. Excellent long stems for cutting.	24	Sept. 15	.60	1.50
Apricot Glow. D. (Bristol.) Pictured p. 13. Rich bright apricot-orange. A summer-flowering cushion type.	17	Sept. 11	.60	1.50	Coppersmith. D. (Bristol, 1956.) Grand 3½-inch blossom of burnished terra-cotta to deeper amber. A top-notch variety.	24	Sept. 25	1.00	2.50
Apricot Spoon. Sp. (Lehman.) A pleasingly different spoon of light apricot-rose. Extremely free flowering.	28	Oct. 5	.60	1.50	Courageous. D. (Kraus.) Shining dark ruby-red, large double flowers. A truly magnificent plant.	26	Sept. 28	.60	1.50
Autumn Beauty. D. (Wallie's Gdns.) Pictured p. 11, 12. A brilliant sparkling reddish chestnut. The best early bronze.	15	Sept. 4	.50	1.25	Crown Jewel. D. (Kraus.) A 3-inch, currant-red flower with a brilliant sheen. Strong, sturdy, free-blooming through October.	27	Oct. 1	.60	1.50
Avalanche. D. (Dreer.) Pictured p. 12, 17. Large, shaggy white with cream center. Everyone's favorite. Good for early cutting.	16	Sept. 4	.50	1.25	Crowning Glory. D. (Lehman.) Magnificent new flower of spanish-orange overcast with coral, darker at center. Strong, upright plant. Could be described as a glorified Beacon that blooms two weeks earlier.	30	Sept. 25	.75	2.00
Beacon. D. (Lehman.) Full, double, 4-inch flower of coral-apricot shading to flaming nasturtium-orange at center. Tall, sturdy plant for cutting.	36	Oct. 8	.60	1.50	Cydonia. D. Pictured p. 13. Brilliant orange-chestnut overlaid with mahogany. Everyone likes it.	30	Oct. 8	.50	1.25
Betty. SD. (C-P.) Pictured p. 19. Splendid upright rose-pink without a trace of magenta. One of the finest pinks.	28	Sept. 28	.50	1.25	Dainty. D. (Lehman.) A beautiful blend of light lavender-lilac aging to soft white with silvery cast. Very early.	16	Aug. 27	.50	1.25
Biretta. D. (Kraus.) Glowing soft cardinal-red. Tall, upright plant in bloom last week in September through October.	34	Sept. 23	.60	1.50	Daisymum. S. (Lehman.) Pictured p. 2, 18. The newest and best single in existence. Flower opens beautiful ivory, changing to pure alabaster-white, with three to four rows of wide flat petals with rounded ends. Pure gold center. Tall, base-branched stems give glorious cutting stems.	30	Sept. 22	.75	2.00
Blanche Litwiller. D. (Kraus.) This incurved lavender-pink pompon is excellent for cutting and floral work. Three or four 2½-inch flowers are borne on long stems and become ball shaped when fully open.	29	Sept. 23	.75	2.00	Dark Red Gold. D. (Lehman.) A pleasing dark ruby color. Very early.	20	Aug. 20	.50	1.25
Blushwhite. SP. (Lehman.) Pictured p. 16. Large, pert and crisp, chalk-white flowers underlaid with soft lavender. Never a mis-formed flower.	18	Oct. 7	.60	1.50	Delight. D. (Lehman.) Pictured p. 27. Large, perfect flower of golden yellow. Excellent plant and foliage. We consider this the best early yellow.	26	Sept. 7	.60	1.50
Bronze Giant. D. (Lehman.) Pictured p. 2. Imposing flower of bright intense bronze in decorative form. Five-inch blooms produced in quantities on perfect upright stems, ideal for cutting.	30	Sept. 22	.75	2.00	Dr. L. E. Longley. D. (U. of Minn.) Earliest fully double, bright rosy lavender. Usually the very first Mum in our collection to bloom.	20	Aug. 20	.60	1.50
Bronze Pat. D. (Muller.) New 1957! Bud sport of Patricia Lehman. As beautiful a bronze as Pat is a pink.	24	Sept. 28	.75	2.00	Early Crimson. D. (Lehman.) Pictured p. 2, 10. Brilliant sparkling jewel-like pompon flowers of bright crimson, on stiff, upright plants. Very hardy.	26	Sept. 14	.60	1.50
Butterscotch. D. (Kraus.) Pictured p. 15. Giant blooms of golden yellow, often 5 inches across. Early flowers golden yellow, later taking on bronze tints. Perfect bush habit. Magnificent.	30	Sept. 26	.75	2.00	Early Gold. D. (Lehman.) Pictured p. 11. Very early! Bright golden yellow pompon with dark foliage. Excellent for pots or borders.	18	Sept. 4	.50	1.25
Carnival. D. (Bristol.) Pictured p. 17. A large, gleaming burnt-orange flower. An excellent plant with lusty green foliage.	26	Oct. 10	.75	2.00	Early Harvest. D. (Kraus.) Pictured p. 27. A mass of charming mahogany-orange flowers for two months. Superior to all popular cushion varieties.	16	Sept. 7	.50	1.25

Name and Description	Height in Inches	Blooming Date	Price Each	Per 3	Name and Description	Height in Inches	Blooming Date	Price Each	Per 3
Early Kathleen. D. (Lehman.) An early coppery bronze. A dead ringer in both color and form for the popular Kathleen Lehman, but two to three weeks earlier. Wonderful for cutting.	26	Sept. 12	\$0.60	\$1.50	Golden Mound. D. (Lehman.) Pictured p. 12. Excellent golden yellow cushion. Numerous 2-inch flowers on short, dark green branches.	18	Sept. 12	\$0.50	\$1.25
Early Lavender. D. (Kraus.) A delicately-toned, early-flowering, pure pearly lavender with slightly deeper center. Free flowering and vigorous cushion.	20	Sept. 20	.60	1.50	Grace Bradshaw. D. (Kraus.) Very large, satin-smooth white flowers completely cover the strong plants. Husky and vigorous grower. Flowers 6 to 7 inches when disbudded.	28	Oct. 2	.75	2.00
Early White. D. (Lehman.) Extra-early, clean cream-white. Wide petals and fine texture with clear coloring make this our best very early white.	18	Aug. 28	.60	1.50	Granny Lehman. D. (Lehman.) Pictured p. 14. Sparkling, heavy-textured, pure white with striking petal arrangement. Loose branching plant produces long cutting stems with six gorgeous flowers. Excellent for arrangements and does not turn lavender with age.	22	Sept. 20	.75	2.00
Edna Rowley. D. (Kraus.) Over 500 lavender-pink, ruby-centered pompon flowers cover this mound-shaped plant. Excellent for cut flowers and floral arrangements. Edna Rowley is definitely the most prolific-blooming Mum we grow.	24	Sept. 26	.75	2.00	Harvest Bronze. D. (U. of Minn.) A rich apricot-bronze with a gold undertone. Large, 3-inch flowers on a low plant. Very early.	15	Aug. 20	.60	1.50
Ellen Roberts. D. (Kraus.) Fully double, light lavender-pink that does not fade. Plant strong and stands up well.	30	Sept. 25	1.00	2.50	Hilite. D. (Lehman.) Pictured p. 2. Fine large, dahlia-like flared yellow. Strong clean with beautiful dome-shaped individual flowers.	30	Sept. 25	.75	2.00
Ermine. D. (Kraus.) Pictured p. 13. Wide-petaled pure white with cream center. Tall, sturdy plant and vigorous grower. Excellent when cut.	30	Oct. 1	.60	1.50	Holiday. D. (Kraus.) Pictured p. 15. Strong plant supporting an abundance of bronze-gold flowers with pure bronze center. Large flower, excellent when cut.	24	Sept. 27	.60	1.50
Evelyn Devaney. D. (Lehman.) Pictured p. 17, 19. The most delicately beautiful of all Mums. Color is new to Mums—true pearly shell-pink. Flowers are stylishly tailored with closely imbricated petals.	26	Sept. 26	.75	2.00	Honeycomb. D. Pictured p. 10. Formal golden yellow pompon.	24	Sept. 28	.75	2.00
Fairbow. D. (Kraus.) Heavy-blooming lavender-pink pompon. Splendid upright growth makes it a good cut flower.	24	Sept. 10	.60	1.50	Indian Red. D. (Lehman.) Pictured p. 13. Large, Indian-rust-colored Mum. Petals radiate from a unique center swirl which gives bold flower distinctive charm.	26	Oct. 3	.75	2.00
Fascination. D. (Bristol.) Stunning 4-inch silvery lavender-pink, a little deeper at center; buds rosy red. Early flowers almost pure white.	24	Sept. 28	.75	2.00	Innocence. D. (Grand Mere.) Perfectly formed, 4-inch, pure chalk-white blooms on stiff stems.	24	Oct. 12	.75	2.00
Fire Engine. S. (Lehman.) Shining cardinal-red single with bright orange reverse. Petals open somewhat spoon shaped. Tall, showy grower.	36	Oct. 1	.50	1.25	Jessamine Williams. SP. (Kraus.) Beautifully quilled white spoon, early and very free flowering.	24	Sept. 20	.60	1.50
Football Bronze. D. (Lehman.) Pictured p. 19. An extremely early, large-flowering, incurved bronze. Very tall, strong, upright plant.	26	Sept. 22	.60	1.50	Jewelstone. D. (Kraus.) Pictured p. 10. Sparkling bright rose-pink pompon. Excellent for pots or short-stemmed cuts. Really a jewel.	24	Sept. 25	.60	1.50
Fred Stone. D. (Kraus.) Large, very dark bright red. Brilliant color. Extra large and good disbudded.	30	Oct. 1	.75	2.00	Joan Helen. SD. (Heuser.) Sparkling garnet-like shading to purple; bright yellow center. Makes an excellent border.	18	Sept. 10	.50	1.25
Gammy. D. (Lehman.) An extremely prolific, deep rosy lavender pompon. Flowers completely double, with very fine substance and beautiful color.	24	Sept. 20	.75	2.00	John Furst. D. (Kraus.) A typical fall color in Mums. Fully double, brilliant glistening orange. Wonderful strong plant and beautiful flowers.	30	Oct. 5	.75	2.00
Garden Queen. D. An old standby in apricot-bronze. Extremely early flowering and very winter hardy.	20	Aug. 20	.50	1.25	Josephine Ferris. D. (Kraus.) Two-inch white pompon with a pink to lavender halo.	19	Sept. 15	.75	2.00
Garnet Spoon. SP. (Lehman.) Pictured p. 16. Tall, upright, wine-red spoons with purple tubes and a domed yellow center.	26	Oct. 4	.60	1.50	Joyous. D. (Bristol.) Pictured p. 13. Salmon rose blooms with a golden haze completely cover the mound-like plants.	20	Sept. 26	.75	2.00
George Luxton. D. (Lehman.) An extremely early, full double, wide-petaled, soft bronze flower 3½ inches in diameter. Excellent plant with abundant base branches for cutting.	25	Sept. 12	.60	1.50	Jubilee. D. (Bristol.) Pictured p. 10, 12. Opens crimson, mellowing to a deep clear red. Plant all aglow for weeks.	18	Oct. 1	.60	1.50
Gladness. D. (Kraus.) Pictured p. 12. Fully double, clear China-rose. Dwarf, free-flowering plant. Winter-hardy and one of the first to bloom.	18	Aug. 28	.50	1.25	Judy. D. (Kraus.) Tight, upright plant with compact, ball-shaped pompons. Flowers white aging to lavender, with white center. Very tidy plant.	21	Sept. 27	.75	2.00
Gold Button. D. (Kraus.) Pictured p. 10. A complete mass of golden yellow with brilliant spanish-orange eye spot. 1½-inch button pompon flower, completely double.	22	Sept. 10	.75	2.00	Julie B. D. (Lehman.) Pictured p. 18. A wonderful white button pompon. Shows slight cream center when fresh but turns completely white and ball shaped, with no eye, when fully open. Upright cushion growth. Good for cutting.	21	Sept. 20	.75	2.00
Gold Daisy. S. (Lehman.) Our best gold single to date. Opens gold to canary-yellow, with big dome-shaped golden center. Three-inch flowers on 20-inch cutting stems.	21	Sept. 17	.75	2.00	Kathleen Lehman. D. (Kraus.) Brightest orange-gold, deepening to red-gold at center. Exciting bronze shades.	28	Sept. 28	.60	1.50
Gold Spoon. D. (Lehman.) Pictured p. 16. Large flower of gold shading to aureolin-yellow on a dwarf plant. Tube longer than spoon and always about the same color.	18	Oct. 1	.60	1.50	Lady's Choice. D. (Lehman.) Pictured p. 18. A large pastel, which could be described as pink-ivory. A fully double, 4-inch flower on a magnificent plant. Fine for arrangements.	36	Sept. 26	.75	2.00
Golden Fantasy. D. (U. of Minn.) The ultimate in carnation-flowered Mums. Petals are tubular, three-pronged and forked. Clean, dark green foliage and strong, upright growth enhance the bright gold flower. A must for all Mum gardens. Completely different.	20	Sept. 20	.75	2.00	Lavender Button. D. (Lehman.) Another of the wonderful new button introductions. Lavender-blue pompon flower with darker center. Good, free blooming and similar in flower to Masquerade. Plant very tall.	28	Sept. 15	.75	2.00
					Lee Powell. D. (Kraus.) Pictured p. 13, 19. Masses of fluffy Chinese-yellow flowers with a slight orange tinge at center. Very similar to large greenhouse varieties. Tall, upright bush.	30	Sept. 23	.60	1.50
					Lemon Drop. D. (Lehman.) A yellow button pompon with a slight green overtone radiating from the center. Extra fine foliage and habit. Very hardy.	17	Sept. 8	.50	1.25

Name and Description	Height in Inches	Blooming Date	Price Each Per 3		Name and Description	Height in Inches	Blooming Date	Price Each Per 3	
Limelight. D. (Floralane.) Lively light yellow pompon. Very vigorous grower. Early; good for cutting.....	34	Sept. 20	\$0.60	\$1.50	Orchid Helen. D. (Becker.) Pictured p. 12, 13. Sturdy, orchid-pink flowers of unusual beauty. Very strong, healthy.....	18	Sept. 10	\$0.60	\$1.50
Lipstick. D. (Grand Mere.) A grand, bright mound of sparkling crimson-red flowers on compact plants.....	22	Sept. 25	.75	2.00	Orloma. D. (DePetris.) Apricot-red pompon on compact plant.....	22	Sept. 25	.60	1.50
Loveliness Spoon. D. (Lehman.) Pictured p. 16. A superb, fully double, carmine-pink spoon. Unique.....	20	Sept. 26	.60	1.50	Orsona. D. (DePetris.) Red-bronze decorative. Bushy cushion growth habit.....	24	Sept. 25	.60	1.50
Luxton's Red. D. (Lehman.) New 1958! A dark red bud sport of George Luxton, with all the other good qualities of its parent.....	25	Sept. 12	.75	2.00	Ostosa. D. (DePetris.) A top-notch new pure white pompon on a semi-dwarf plant. Free blooming and early.....	24	Sept. 25	.60	1.50
Magenta Spoon. D. (Lehman.) Pictured p. 16. Lively magenta-rose spoon flowers in profusion.....	22	Oct. 1	.60	1.50	Patricia Lehman. D. (Kraus.) Pictured p. 15. Sparkling geranium-pink with peach center. Recurved and twisted petals give a fluffy, feathery effect. Strong growth, good for cut flowers.....	24	Sept. 28	.60	1.50
Mahogany Cushion. D. (Lehman.) Twisted petals of jasper-red shading to mahogany. Large cushion plant.....	20	Sept. 28	.60	1.50	Plainsman. (U. of Nebr.) Another carnation-flowered variety. Color cinnamon-red with bronze shadings. Flowers produced in abundance on strong cutting stems. A distinct novelty.....	30	Sept. 24	.60	1.50
Malinda Brown. D. (Kraus.) Pictured p. 13. A magnificent clear self lavender-pink. Flowers globular, mounded at center; petals strongly incurved and twisted. Very strong and healthy.....	24	Sept. 27	.60	1.50	Polaris. S. A golden yellow daisy with two rows of wide, stiff petals and large yellow center.....	24	Oct. 5	.75	2.00
Marie Hartman. D. (Kraus.) Large, canary-yellow flower, 4 inches in diameter. New flowers cover old bloom to give fresh appearance for a full month.....	18	Sept. 28	.75	2.00	Polar Ice. D. (Kraus.) Clear ice-white, double, 3-inch flowers. Very free flowering. One of the earliest.....	22	Sept. 9	.60	1.50
Martin's Yellow. Pictured p. 12. In our estimation the very finest early, large-flowered light yellow in existence. Flowers very large, fluffy and exquisite light yellow.....	18	Sept. 15	.60	1.50	Princess. D. (U. of Minn.) New 1958! Extremely early flowering, split-petaled or carnation-flowered Mum. Color deep old-rose with gold tipping. In good bloom for two months... 16	Aug. 23	.75	2.00	
Mary Harrison. SD. (Kraus.) Bright, glowing aster-purple, lightening to phlox-purple. Semi-double. Excellent for cutting.....	24	Sept. 26	.60	1.50	Princess Kay. D. (Lehman #1193.) New 1958! Pictured on cover and p. 3. This is a fully double, broad-petaled, heavy-textured flower of alabaster-white, showing no yellow center. Produces 3½-inch terminal flowers with 8 to 10 bloom on lateral branches. As beautiful as the lovely girl it is named for.....	24	Sept. 20	1.00	2.50
Masquerade. D. (Bristol.) Pictured p. 10. A glistening mass of silvery lavender and rose pompons. Trim, neat, compact plant. Flowers completely smother the plant.....	24	Oct. 6	.75	2.00	Purple Cushion. Glorious mounds of peony-purple flowers that completely smother the compact plants with color.....	20	Sept. 24	.75	2.00
Minnehaha. D. (U. of Minn.) New 1958! Delightful salmon-rose flowers completely cover the mound-like plants in early fall.....	20	Sept. 9	.75	2.00	Purple Heart. D. (Lehman #1236.) New 1958! Semi-quilled petals of grapejuice-purple with a silvery reflex. This flower ages well and is a beautiful color when several weeks old.....	26	Sept. 28	1.00	2.50
Minnpink. D. (U. of Minn.) Pictured on cover and p. 28. The most gorgeous color of all the compact, early pin cushion varieties. Thousands of clear, clean rose-pink flowers completely hide the mound-like plant.....	16	Sept. 20	.75	2.00	Purple Spoon. SP. (Lehman.) The very earliest good-flowered spoon in our entire collection. Both tubes and spoons soft purple.....	22	Sept. 20	.75	2.00
Mojave Gold. D. (Kraus.) Pictured p. 15. Immense, disk-like flowers of sparkling golden bronze. Huge blooms. An exhibitor's favorite.....	28	Sept. 27	.75	2.00	Purple Waters. D. (Lehman.) Pictured p. 2. The best early deep purple in our collection. Double, 3-inch flowers completely smother the 2-foot plant. If you like purple Mums, this will please you.....	24	Sept. 17	.75	2.00
Mt. Hood. D. (Kraus.) New 1957! Exquisite, tightly knit, aster-like pure white with green cast in center.....	24	Sept. 22	1.00	2.50	Raggedy Ann. D. Interesting snow-white split-petaled or carnation-flowered variety that is outstanding in the garden. Compact, cushion-like growth completely covered with flowers for two months.....	16	Sept. 25	.75	2.00
Muriel Rice. D. (Lehman.) Pictured p. 15. Fully double, 4-inch flowers of light primrose-yellow aging to deep cream early in the season. Later in the season it picks up a lavender tint much like Peace rose. Another American variety showing the large flower influence of English blood. Extremely thrifty plant.....	26	Sept. 25	.75	2.00	Red Elf. SD. (Lehman.) Dwarf, clean, bright red pompons on tiny plants not over 12 inches tall.....	12	Sept. 9	.50	1.25
Myrtle Walgreen. D. (Kraus.) Rich amaranth-purple underlaid with silvery lilac, aging to clean, clear mallow-purple. Excellent.....	26	Sept. 28	.50	1.25	Red Torch. S. (Lehman.) Bright single red. A replacement for Louise Schling. A bit late but frost-hardy. A mass of striking color.....	30	Oct. 5	.50	1.25
Nanook. D. (Kraus.) A dwarf, compact mound completely smothered by white flowers with cream centers.....	14	Sept. 14	.60	1.50	Redglow. D. (Kraus.) Pictured p. 10. Dark glowing red pompon flowers in abundance. Courageous-type plant. Excellent habit.....	30	Sept. 20	.60	1.50
New Drifted Snow. D. (Lehman.) Heavy-textured, 3-inch, white blooms for nearly two months. Very clean plant with spreading growth and drifting appearance.....	23	Sept. 10	.60	1.50	Reflection. D. (Lehman.) An extremely free-flowering, deep rosy lavender. Completely covers itself with bloom. Replaces Cecil Beed.....	24	Sept. 26	.60	1.50
New Martin's White. D. (Lehman.) A larger, more vigorous plant and flower than Martin's White. Absolutely pure white, wide-petaled, 4-inch flowers with light green foliage on cushion plant. In bloom for two months.....	20	Sept. 20	.75	2.00	Reverence. D. (Kraus.) Extremely large, light chamois-yellow. Gives early individual flowers on 6 to 8-inch stems.....	22	Sept. 3	.60	1.50
New Paper White. D. (Lehman.) Pictured p. 27. Improved plant and flower of old Paper White. Wide, glistening, purest white flowers completely cover the plant. Extra vigorous growth.....	16	Sept. 6	.75	2.00	Rouge Cushion. D. (Lehman.) Pictured p. 27. A far superior red cushion. Intense red flowers show a small bright yellow center when mature.....	15	Sept. 20	.60	1.50
Nye's Favorite. D. Masses of lavender-pink flowers with golden shadings.....	24	Sept. 12	.60	1.50	Royal Robe. D. (Kraus.) Beetroot-purple flower with a bluish sheen reflecting from the center. A very good all-round variety. Color superb.....	27	Sept. 25	.75	2.00
Old Lavender. D. (Lehman.) Pictured p. 18. Massive, pure lavender self flowers on strong, sturdy stems. Brighter and earlier than Lavender Lady.....	34	Sept. 30	.60	1.50	Ruby Breithaupt. D. (Kraus.) Large, 6-inch, domed, shaggy flowers of pleasing light primrose-yellow. Excellent as a disbud.....	28	Oct. 1	.75	2.00

D., Double; SD., Semi-double; S., Single; SP., Spoon

Name and Description	Height in Inches	Blooming Date	Price		Name and Description	Height in Inches	Blooming Date	Price	
			Each	Per 3				Each	Per 3
Ruby Spoon. D. (Lehman.) Pictured p. 16. Large, bold, firm, spoon-type flower of bright ruby-red.	24	Sept. 27	\$0.75	\$2.00	Wanda. D. (U. of Minn.) Three-inch flowers of raspberry-red aging to carmine-rose cover the mound-like plants from early August to killing frost	18	Aug. 14	\$0.60	\$1.50
Ruthann Lehman. D. (Kraus.) Pictured p. 17. Immense, canary-yellow flower. Excellent plant and growth habit. Long stems make it a fine cut-flower variety	24	Sept. 18	.60	1.50	Wenonah. D. (U. of Minn.) Pictured p. 11. Wonderfully free and early-flowering, pure soft lavender pompon. One of the very first to bloom	18	Aug. 24	.60	1.50
Ruth Scott. D. (Kraus.) Fine reflexed, incurved golden bronze, 4½-inch flower.	24	Sept. 28	1.00	2.50	White Cloud. D. (U. of Nebr.) Large, feathery, pure white. Strong plant. We consider this the most satisfactory of all white Mums for garden planting.	26	Sept. 20	.60	1.50
Snowspoon. SP. (Kraus.) Large, shasta-daisy-like, duplex pure white with golden center. This is one of the finest new spoons developed. Base branching; excellent for cutting and arrangements	20	Sept. 18	.60	1.50	White Cushion. D. Strong-growing white with a trace of pink.	24	Sept. 28	.50	1.25
Spellbound. D. Husky, decorative plant with flowers of delicate pink.	22	Oct. 1	.75	2.00	White Masquerade. D. (Thomas.) Shining mass of silvery white pompons. Beautiful companion for Masquerade.	24	Oct. 6	.75	2.00
Spindrift. D. (Bristol.) Luscious pure white with cream center. Slight cactus flare, like a dahlia. Three-inch flowers on 2-foot plants. Wonderful when cut.	24	Oct. 3	.75	2.00	White Sail. D. (Lehman.) The best midseason white. Very heavy-textured flowers are white with slight cream center. Clean, vigorous growth, branching from ground, makes excellent cutting material.	21	Sept. 23	.75	2.00
Success. D. (C-P.) Pictured p. 17. Large, rich, never-fading flowers of deep crimson. Rigid, upright plant. Very clean.	22	Oct. 7	.75	2.00	Winterset. D. (Peck.) Pictured p. 19. Strong-growing, large snow-white. A timely cutting and garden Mum	28	Oct. 2	.60	1.50
Sunstone. SP. (DePetris.) Masses of soft yellow, quilled, spidery spoons on vigorous plants. Outstanding for flower arrangements and fine for garden decoration.	30	Oct. 8	.75	2.00	Yellow Avalanche. D. (Lehman.) Pictured p. 11. A brilliant soft yellow bud sport of the popular white Avalanche. Unexcelled for cutting and unsurpassed in beauty.	22	Sept. 4	.50	1.25
Tecumseh. D. (U. of Nebr.) Opens erthritered, aging to buffy bronze with pink edges. Cushion growth	18	Sept. 2	.50	1.25	Yellow Chris Columbus. D. (Neal Bros.) An extra bright lemon-colored sport of Chris Columbus	26	Sept. 15	.60	1.50
Theresa Stone. D. (Kraus.) A glorious creamy white pompon with a drifting sheen of primrose and ivory. Very perky.	20	Sept. 26	.60	1.50	Yellow Ermine. D. A bud sport of Ermine. Glorious, fluffy, light chrome-yellow flowers in abundance on long stems.	30	Oct. 1	.60	1.50
Tribute. D. (Kraus.) Pictured p. 17. Large, fully double flower opening bright daphne-red and maturing to daphne-pink.	22	Sept. 14	.60	1.50	Yellow Muriel. D. (Lehman.) New 1958! A glorious golden yellow bud sport of Muriel Rice, with all the excellent qualities of its parent plus a bright gold color.	26	Sept. 25	1.00	2.50
Tuneful. D. (Bristol.) Extremely large and early clear rose-pink. Grand for cutting	30	Sept. 28	.75	2.00	Yellow Spoon. SP. Pictured p. 13, 16. Bright clear golden yellow tubes and spoons.	22	Oct. 8	.60	1.50
Violet. D. (Longley.) Pictured p. 27. The best very early purple. Full, dahlia-like bloom with good color and substance.	20	Aug. 26	.50	1.25					
Vulcan. D. (U. of Minn.) Pictured p. 11. Deep crimson flowers with a rusty sheen on low, compact plants. This is our best very early red to date	16	Sept. 5	.60	1.50					



CHRYSANTHEMUM BORDER

5

All-American Red

Admiral
Apache

Courageous
Crown Jewel

Lipstick

5 Sure-to-Bloom Plants
(1 of each)

\$2.90

(\$3.45 value)

5

All-American White

Ermine
Ostosa

White Sail
White Cloud

Winterset

5 Sure-to-Bloom Plants
(1 of each)

\$2.80

(\$3.15 value)

5

All-American Lavender-Pink

Evelyn Devaney Old Lavender
Malinda Brown Patricia Lehman
Reflection

5 Sure-to-Bloom Plants
(1 of each)

\$3.00

(\$3.15 value)

SPECIAL OFFER!

30 All-American Mums

(1 of each listed on this page)

\$16.50
POSTPAID

5

All-American Bronze

Autumn Beauty George Luxton
Crowning Glory Holiday
Kathleen Lehman

5 Sure-to-Bloom Plants
(1 of each)

\$2.85

(\$3.05 value)

5

All-American Yellow

Charles Nye
Delight

Lee Powell
Muriel Rice

Ruthann Lehman

5 Sure-to-Bloom Plants
(1 of each)

\$2.75

(\$3.05 value)

5

All-American Purple

Chippewa Purple Heart
Myrtle Walgreen Purple Waters
Royal Robe

5 Sure-to-Bloom Plants
(1 of each)

\$2.75

(\$3.50 value)

The Greatest MUM Bargains of 1958



What Other People Say:

Madisonville, Ky.
The Chrysanthemums I ordered back in the spring are blooming so beautifully. The Surprise Collection I ordered are the most beautiful blooms and colors I have ever seen. They are just wonderful and each one is different.—Mrs. E.A.

Rutland, Vt.
I am enclosing my check, for which please send me the Surprise Collection. I ordered this collection last year and was very well pleased.—H.M.C.M.

Coldwater, Ohio
Last year I had your Surprise Collection of 25 and I was sure pleased with them. They grew and bloomed nicely.—E.E.

St. James, Minn.
Please send me your Surprise Collection. This is the third time I have sent for this collection and I certainly have received some beautiful Mums this way.—Mrs. M.L.

Darrouzett, Tex.
This is now the third time that I have given you an order for the Surprise Collection, and I have never ordered any other by name. The reason for this is that the Surprise Collection offers all the varieties and colors wanted in a small garden. They have never been a disappointment.—H.O.R.

Auburn, N. Y.
I had your Surprise Collection last year and I was very pleased with the types and colors. The plants arrived in perfect condition.—M.E.F.

Surprise Collection

If you do not care about the names of your Mums, but just want to grow them for a gorgeous display in the fall or for cutting bouquets for the house, then you can save money by ordering this special Surprise Collection. It includes every color and type shown in this catalog. All are first-quality, sure-to-bloom plants, but come to you unlabeled as to name. See for how little money you can have a big Mum garden.

5 for \$1.55; 10 for \$2.90; 25 for \$6.75; 100 for \$25.00



BUTTON POMPONS



MASQUERADE. 75c each; 3 for \$2.00



HONEYCOMB. 75c each; 3 for \$2.00

9
Perky
POMPON
COLLECTION

Everyone's favorite. The trim, compact, very double flowers are ideal for arrangements. The blooms, although small, are lavishly produced on compact plants which are completely covered with flowers.

One of each pictured here PLUS:
Edna Rowley. New. Pink button pompon with ruby eye.
White Masquerade. New. Exactly like Masquerade except that the color is clear lavender-white.

9 Sure-to-Bloom Plants
SPECIAL PRICE
\$4.50



GOLD BUTTON. 75c each; 3 for \$2.00



EARLY CRIMSON. 60c each; 3 for \$1.50



REDGLOW. 60c each; 3 for \$1.50



JEWELTONE (Pink). 60c each; 3 for \$1.50
JUBILEE (Red). 60c each; 3 for \$1.50



YELLOW AVALANCHE. 50c each; 3 for \$1.25



AUTUMN BEAUTY. 50c each; 3 for \$1.25



CHIPPEWA. 50c each; 3 for \$1.25

**7
SUMMER
BLOOMING
MUMS**

A selection of good early-flowering Mums that always beat the early fall frosts. Very dependable varieties.

7 Sure-to-Bloom Plants

\$3.30

(1 of each pictured)



ADORABLE. 75c each; 3 for \$2.00



WENONAH. 60c each; 3 for \$1.50



VULCAN. 60c each; 3 for \$1.50



EARLY GOLD
50c each; 3 for \$1.25



AUTUMN BEAUTY. 50c each; 3 for \$1.25



GLADNESS. 50c each; 3 for \$1.25



JUBILEE. 60c each; 3 for \$1.50
AVALANCHE. 50c each; 3 for \$1.25



ORCHID HELEN. 60c each; 3 for \$1.50



MARTIN'S YELLOW. 60c each; 3 for \$1.50

7
COLOR MOUND
COLLECTION

A selection of seven very fine early-blooming, low-growing kinds. Ideal for foreground or border edging.

7 Sure-to-Bloom Plants

\$3.00

(1 of each pictured)



GOLDEN MOUND. 50c each; 3 for \$1.25



CHARLES NYE. 50c each; 3 for \$1.25



CYDONIA. 50c each; 3 for \$1.25



JOYOUS. 75c each; 3 for \$2.00



ORCHID HELEN. 60c each; 3 for \$1.50



ERMINE. 60c each; 3 for \$1.50



LEE POWELL. 60c each; 3 for \$1.50



INDIAN RED. 75c each; 3 for \$2.00



APRICOT GLOW. 60c each; 3 for \$1.50

DOZEN MUM COLLECTION

A grand assortment of all colors, types and blooming seasons that will give one a complete Mum garden.

12 Sure-to-Bloom Plants (one of each pictured) plus 1 Butterscotch (see page 15)

12 Plants for \$5.25

A SENSATIONAL BARGAIN!

MALINDA BROWN
60c each;
3 for \$1.50



APACHE
75c each;
3 for \$2.00



YELLOW SPOON. 60c each; 3 for \$1.50



Let Us Make Your Selection

If you prefer to have personal, professional help in selecting the varieties for your particular needs, let us make your selection. Send us the amount you wish to spend for GARDEN MUMS, tell us what color and types you prefer—whether for cutting or garden display, whether early, late or midseason varieties—and we will select the best in our large collection of over 200 varieties. You save approximately 30% by having us select your Mums.

You will be thrilled by the fine plants you receive. All will be labeled and SURE-TO-BLOOM.



Russell, Kans.

Last year I ordered some hardy Mums, having your personal help in making the selections. They came in such excellent shape and gave such beautiful blossoms that I was very happy from trying your plants. Several asked to see your catalog because they were impressed by your Mums' beauty. Again I should like to ask your help in selecting two gift orders for friends.—E. A. G.

Granny Lehman



MURIEL RICE. 75c each; 3 for \$2.00



BUTTERSCOTCH. 75c each; 3 for \$2.00



HOLIDAY. 60c each; 3 for \$1.50

**6
BIG FLOWER
COLLECTION**

All have very large flowers for garden Mums and all are early blooming. Flowers up to 5 inches if disbudded.

6 Sure-to-Bloom Plants

\$3.90

(1 of each pictured)



APACHE. 75c each; 3 for \$2.00

MOJAVE GOLD. 75c each; 3 for \$2.00



PATRICIA LEHMAN. 60c each; 3 for \$1.50



MAGENTA SPOON. 60c each; 3 for \$1.50

7
Sterling
**SPOON
MUMS**

A complete color
range in these popu-
lar novelties.

7 Sure-to-Bloom Plants

\$3.55

(1 of each pictured)



BLUSHWHITE. 60c each; 3 for \$1.50



GARNET SPOON. 60c each; 3 for \$1.50



GOLD SPOON. 60c each; 3 for \$1.50



LOVELINESS SPOON. 60c each; 3 for \$1.50



YELLOW SPOON. 60c each; 3 for \$1.50



RUBY SPOON. 75c each; 3 for \$2.00



ADMIRATION. 75c each; 3 for \$2.00



EVELYN DEVANEY
75c each; 3 for \$2.00



TRIBUTE. 60c each; 3 for \$1.50



RUTHANN LEHMAN. 60c each; 3 for \$1.50

7
Good
MUM
COLLECTION

Seven outstanding, good
all-round varieties.

7 Sure-to-Bloom Plants

\$3.95

(1 of each pictured)



SUCCESS. 75c each; 3 for \$2.00



CARNIVAL
75c each; 3 for \$2.00



AVALANCHE. 50c each; 3 for \$1.25



OLD LAVENDER. 60c each; 3 for \$1.50



JULIE B. 75c each; 3 for \$2.00

**4 NOVELTY ARRANGEMENT
COLLECTION**

4 Sure-to-Bloom Plants

\$2.40

(1 of each pictured)

Our granddaughter Julie B. playing "He loves me, he loves me not" with DaisyMum.



DAISYMUM. 75c each; 3 for \$2.00



LADY'S CHOICE. 75c each; 3 for \$2.00



ADMIRAL. 75c each; 3 for \$2.00

7
Bouquet
MUMS

Mums as cut flowers in the house seem to last forever. Plant this collection and pick armfuls of wonderful long-stemmed flowers.

7 Sure-to-Bloom Plants

\$3.70

(1 of each pictured)



FOOTBALL BRONZE. 60c each; 3 for \$1.50



LEE POWELL. 60c each; 3 for \$1.50



BETTY. 50c each; 3 for \$1.25



WINTERSET. 60c each; 3 for \$1.50

CHARLES NYE. 50c each; 3 for \$1.25



EVELYN DEVANEY. 75c each; 3 for \$2.00





PRESIDENT. \$1.75 each



RAMONA. \$1.75 each



HENRYI. \$1.75 each



LADY BETTY BALFOUR. \$1.75 each



JACKMANI. \$1.50 each

CLEMATIS *Special Offer*

1 RED 1 WHITE 1 PURPLE

If you are not familiar with varieties and would like us to help you make your selection, we can save you 30%.

3 Sure-to-Bloom Plants \$4.00

CRIMSON STAR. \$2.00 each



NELLY MOSER. \$2.00 each

CLEMATIS

Since the introduction of the large-flowered hybrid varieties from Europe, the Clematis is rapidly becoming one of the leading vines in America. These new hybrids have spectacular flowers and glorious colors. Most of them are practically everblooming. They can be grown on trellises, arbors or posts, or can be left to ramble over an old stump or rock wall.

We find that an east or south exposure is best. They prefer a rich soil and can take a lot of water, provided the drainage is perfect.

COMTESSE DE BOUCHAUD. In our estimation the closest approach to clear pink of all the hybrid Clematis. The color is a clear satiny rose. Flowers in abundance from July until September. Neat growing habit, up to 7 to 8 feet. \$2.00.

CRIMSON STAR. We think this is the finest of all hybrid red Clematis. Large, clear crimson flowers with pointed petals. Very free flowering, blooming from July to September. The variety we offer is true Crimson Star. \$2.00.

DUCHESS OF EDINBURGH. Double, gardenia-like, cream-white flowers with a chartreuse overcast. Very unique and desirable. In bloom from mid-July on. \$2.00.

ERNEST MARKHAM. A very strong-growing Clematis in red shades. Petals wide, rounded at the ends, of bright cerise-red. Perhaps the best of all the light reds. July blooming. \$1.75.

FAIRY QUEEN. The finest white in our collection. Large, wide-petaled flowers 7 inches across; pure white with a pearl overcast. In bloom from June to September. Sturdy growth to 10 feet in height. \$1.75.

HENRYI. The giant among white Clematis. Large, paper-white, long-pointed petals and chocolate-brown anthers. In bloom from July to frost. Vigorous growth, 8 to 10 feet. \$1.75.

HULDINE. The translucent blooms are pearly white with a bluish undertone. Strong growing, up to 12 feet. Free flowering from July to October. \$1.75.

JACKMANI. The most popular Clematis in America. Seen throughout the length and breadth of the land with its masses of four and five-petaled, deep purple flowers in July. Extremely vigorous and hardy. 8 to 10 feet. \$1.50.

JACKMANI SUPERBA. A new hybrid that is larger and deeper colored than Jackmani. A splendid addition to the deep purple class. Rich velvety deep purple in color, and in bloom most of the summer. Height to 8 feet. \$1.75.

LADY BETTY BALFOUR. This is the finest deep blue in our collection. Color is a very velvety deep navy-blue with a center of white anthers. Very vigorous and free flowering. Plant Lady Betty Balfour and you plant the best in deep blue Clematis. Height to 12 feet. \$1.75.

LANUGINOSA CANDIDA. Large flowers of the purest white, abundantly produced from midsummer to frost. Plant vigorous and sturdy, climbing to 10 feet. \$1.75.

M. KOESTER. An extremely vigorous and free-blooming mauve-pink. In bloom from midsummer to frost. Sturdy growth to 10 feet. \$1.75.

MME. BARON VEILLARD. An extremely vigorous and satisfactory pink Clematis. Color is a clear lilac-rose, becoming much deeper in the fall as the days become cooler and shorter. In continuous bloom from June to September. Very sturdy growth from 10 to 12 feet. \$1.50.

MME. CHOLMONDELEY. An extremely early-flowering variety of wisteria or delphinium-blue. In bloom from June to September, on moderately vigorous plants to 8 feet. \$1.75.

MME. EDOUARD ANDRE. One of the older red Clematis, with smaller flowers on moderately vigorous plants. \$1.50.

NELLY MOSER. The very earliest of all Clematis to bloom. The first flowers usually appear right after the Darwin tulips bloom and continue most of the summer. Color pale mauve-pink with a red stripe down the center of each petal. Moderate growth to 8 feet. \$2.00.

PANICULATA. Quantities of small, fragrant, star-shaped white flowers. Very popular and widely grown. 15 to 18 feet. Blooms in September and October. \$1.50.

PRESIDENT. One of the most gorgeous of the deep rich reddish plum-colored varieties. Flowers are large, with extremely pointed petals and brilliant color. Moderate growth up to 7 to 8 feet. June. \$1.75.

There are no insects or diseases that trouble Clematis in the North. They are perfectly hardy and make excellent cut flowers. Planting can be done in the spring. The plants we send out are one year old, pot grown, and should be planted 3 to 4 inches deeper than they were in the pot. This is important, and perhaps the reason for many failures with Clematis is too shallow planting. Our collection now consists of over 50 varieties, and we are herewith listing some of the most spectacular and easy-to-grow kinds.

RAMONA. Our favorite of all the medium blue Clematis. Flowers exceptionally large (6 to 8 inches across), with wide, heavy-textured petals. Free and dependable bloomer from July until frost. Plant vigorous, climbing to 10 feet. \$1.75.

VILLE DE LYON. Very free-flowering carmine-red with darker stripe in the center of each petal. Blooms from July to September and grows to a height of 8 to 10 feet. \$1.75.

WILLIAM KENNETH. Very large, deep cool lavender flowers produced in abundance from June to September. \$1.75.

PASSIFLORA (Passion-Vine)

One of our hobbies over the years has been collecting and growing these exotic and interesting vines. If they are planted out in the spring and given rich soil, abundant moisture and a sunny spot, they will provide a succession of bloom all summer long. They are not hardy in the North, so they must be treated as annuals or taken indoors for the winter. They can also be grown in large pots sunk into the ground for the summer. A vine in flower will create much interest among your gardening friends. Our plants are large, one-year old vines that are sure-to-bloom within a month after planting.

ALATA CAERULEA. Large, showy, fragrant flowers with lavender-pink petals and purple crown with white corona. The most spectacular Passiflora. Sturdy plants. \$1.50.

INCARNATA (Maypop). Greenish white petals and blue-purple filaments. The easiest to grow and most free flowering. \$1.50.

MARCEL. A curious hybrid with lilac-pink petals and light blue, crinkled filaments. Extremely fragrant. \$1.50.



HYBRID CLEMATIS

Mum Culture and Care

We believe our sure-to-bloom plants, grown from virgin cuttings, well established in 2¼-inch pots and sent to you with a ball of good soil about the roots, are the most practical and economical to buy. Our Mother plants are grown as nature intended them to be—given a rest period of two months. This insures much more vigorous offspring than plants grown by many who use the artificial method of keeping the plants growing the year around, which decreases vigor and encourages premature budding. Our plants make big, healthy, blooming specimens by early fall. Our Mum stock is carefully grown and rogued, true to name, and state inspected. We take pride in having Mum plants with clean, healthy foliage clear to the ground. We have hundreds of letters in our files from every state in the country telling us how well our plants have done in all sections. Many of these plants were shipped over 2000 miles and still did remarkably well.

CULTURE

Garden Mums are among the easiest of all hardy plants to grow. They will tolerate almost endless neglect and still survive and give some bloom. To have them at their best, give them good culture, a sunny location, a rich soil and do not let them suffer for want of moisture during the hot summer.

Mums in the garden should be planted in an open, sunny location and should not be shaded by buildings, large shrubs or trees for more than three or four hours per day. Any fairly rich soil, be it sandy, clay or loam, that will grow other flowers and vegetables well, will also grow good Mums. There is no soil that Mums particularly favor; they will grow equally well in all. They love humus such as peat, leaf mold or barnyard manure. They will not thrive in a hard-baked and cracked soil. Loosen it up with peat so the water will penetrate and not run off when applied.

PLANTING

Spring is by far the best planting season. The proper planting time is when the spring garden work is well under way and the heavy, ice-freezing frosts are past. Planting can begin about the time early tulips begin to bloom and can be continued until peonies are in bloom. Here in Southern Minnesota this would be from about late April until mid-June. Farther south this date would be advanced according to the climate. Young plants always give the best bloom, so we recommend that clumps that have wintered be divided in the spring to individual shoots when they have made 4 or 5 inches of growth. You will be surprised how rapidly these small shoots will grow and how much better bloom they will give you than old crowded clumps.

FERTILIZING

Our Mums are grown in a black loam soil to which peat has been added. Inasmuch as peat is completely deficient in phosphate, we use bonemeal or superphosphate well worked into the soil before planting, at the rate of a small handful per plant.

At planting time it is good practice to give your plants a head start by using one of the water-soluble fertilizers such as Ra-Pid-Gro, Plant Marvel, Hyponex or Instant Vigoro. Dissolve this fertilizer in water according to directions, and then make a saucer-like ring around each plant. Give each one a good soaking of about a gallon of this solution. This process can be repeated at one-month intervals during the summer for maximum growth.

If you prefer to use a dry fertilizer in place of the liquid, one or two applications will be sufficient. Roughly, about a small handful of commercial fertilizer per plant at about one-month intervals is sufficient. The first application can be made in late July or early August. This highly concentrated fertilizer should not be used when the soil is dry, because foliage and root burn will result. Be sure that plenty of moisture is available at time of application.

WATERING

The best way to water Mums is to make a saucer-like depression about the plant, lay the hose on the ground, and let the water run slowly. The following day the soil can be loosened up and leveled again. A thorough watering like this should be sufficient for a week or ten days, even during the hottest and driest weather. Sprinkling the plants from overhead should be discouraged, for that invites foliage diseases.

PINCHING

To have sturdy and well-branched plants it is advisable to pinch the terminal shoots once or twice during the season. This operation is done with the thumb and forefinger and consists of removing about ½ inch of the soft growing tip of the main shoots. The first pinching should be done when the plants are about 6 inches tall, to induce lateral branches. When these lateral branches are 8 to 10 inches tall, their tips should be removed to induce more branches. Discontinue pinching by August 1, as the plants will soon be forming buds. The very early-blooming varieties should not be pinched after July 15.

If your Mums are grown in partial shade or in extremely rich soil, they may grow very tall and spindly. To prevent this, one must use harsh treatment. We suggest using the pruning shears and cutting away the top half of the plant. This means that if your plants are 2 feet tall you should cut them back to 1 foot. In the North, this treatment should not be done after July 15 and in the South not later than August 15; otherwise buds will be destroyed. You will be surprised how rapidly the plants will outgrow this cropping and how nicely they will flower. A well-pinched plant will not need staking or other support, since the growth will be strong and sturdy and will stand erect.

SPRAYING

In order to get the best from your Mums we recommend a simple spray or dusting program to keep your plants free from insects and disease. In gardens with a wide variety of plants that naturally harbor insects and diseases, Mums will need a little attention. Usually the dusts or sprays recommended for roses will control the major Mum troubles. We think three or four dustings or sprayings at two-week intervals are sufficient to produce a good healthy crop of flowers.

The most common insects attacking Mums are aphids, tarnished plant bugs, red spiders and leaf hoppers. The less common ones are foliar nematodes and grasshoppers.

We have been very successful using a combination spray of Malathion, D.D.T. and Fermate at two-week intervals during the summer. This combination will control all major insects and leaf spots. We use the following concentrations:

To a gallon of water, we add the following:

1 tablespoonful 25% wettable Malathion, 2 tablespoonfuls 50% wettable D.D.T., 1 tablespoonful Fermate and 1 tablespoonful Drest to make the solution stick to the foliage

Foliar nematode is an extremely small insect that lives within the leaf tissue of Mums and causes the foliage to turn brown from the bottom of the plant upward; in severe cases all the foliage will be browned, leaving the naked flowers on the stems. In areas where the foliar nematode is troublesome, we recommend spraying with 15% wettable Parathion at the rate of one tablespoonful to a gallon of water. Although the Parathion is very toxic and somewhat dangerous, it is safe if used according to directions and with caution.

In areas where grasshoppers are troublesome, we recommend using a 45% wettable Chlordane at the rate of 2 tablespoonfuls to a gallon of water. This will also control ants and cutworms.

If you cannot secure good sprays from your local dealer, we are in a position to supply you with the following:

All Purpose Mum and Rose Spray containing Malathion, D.D.T. and Fermate or Captan, at the following prices:

8 ozs. \$1.50 (a season's supply for 50 plants)
Lb. \$1.75 (a season's supply for 100 plants)

D.D.T. 50% Wettable. Lb. \$1.25.

Fermate. ½lb. \$1.25.

Chlordane 45% Emulsion. ½pt. \$1.50.

Mum Culture and Care

BLOOMING TIME

It has been definitely proved that Chrysanthemums are sensitive to light and that the length of day determines the blooming time for a given variety. Since Minnesota is quite far north, where naturally the fall days are shorter than farther south, a given variety will normally bloom 20 days earlier here than in Texas. We are located approximately 200 miles north of Chicago, and we know that the same variety will begin blooming for us four or five days sooner than in Chicago. From this we deduct that perhaps two days for every 100 miles of latitude is about the average difference in blooming time.

Temperature is also a very important factor in the blooming time of Mums. For every day that the temperature is above 90 degrees during the bud-formation period (August and September) of garden Chrysanthemums, the blooming time will be retarded about one day. Hence when we have cool weather in fall, the Mums will bloom early and when we have hot weather the Mums will bloom late. Interesting, isn't it?

WINTER PROTECTION

The purpose of winter protection is probably more to keep the cold in the ground than to keep it out. A favorable location, one which does not allow ice and water to stand over the plants, is very necessary. It is the alternate thawing and freezing that does the winter damage to garden Mums. After the tops have been killed by frost, the stems should be cut off 2 to 3 inches above the crown and burned to prevent the spread of foliage disease. We have found that any light, porous material that will remain more or less dry during the winter is ideal for covering. Excelsior, evergreen boughs, marsh hay, and cornstalks are very good if applied after the ground is slightly frozen. Leaves applied and kept dry with a waterproof covering will also make very fine covering.

GROWING LATE-BLOOMING VARIETIES IN THE NORTH

In the far North it is almost impossible to grow and flower the late-blooming kinds in the garden, because heavy October frosts usually spoil the buds. These varieties can easily be enjoyed in the North by digging them up just before hard frosts and planting them in a box or large flower pot. If they are shaded a few days and watered freely, they can be brought into the house or enclosed porch and will be in full bloom for a month or more. Mums are about the only plants we are familiar with, that can be dug from the garden in full bud and bloom, and brought into the house without any noticeable check in growth.

If you find that the color combination of the garden should be changed at blooming time, or you would like a plant in another location, just dig it up carefully, leaving as much soil about the roots as possible, and transfer it to the desired location. It will keep right on growing if water is applied freely. Or, try growing some plants in the vegetable or service garden during the summer. In the fall they can be transplanted to spots left vacant by early annuals.

MUMS FOR YOUR WINDOW-BOX

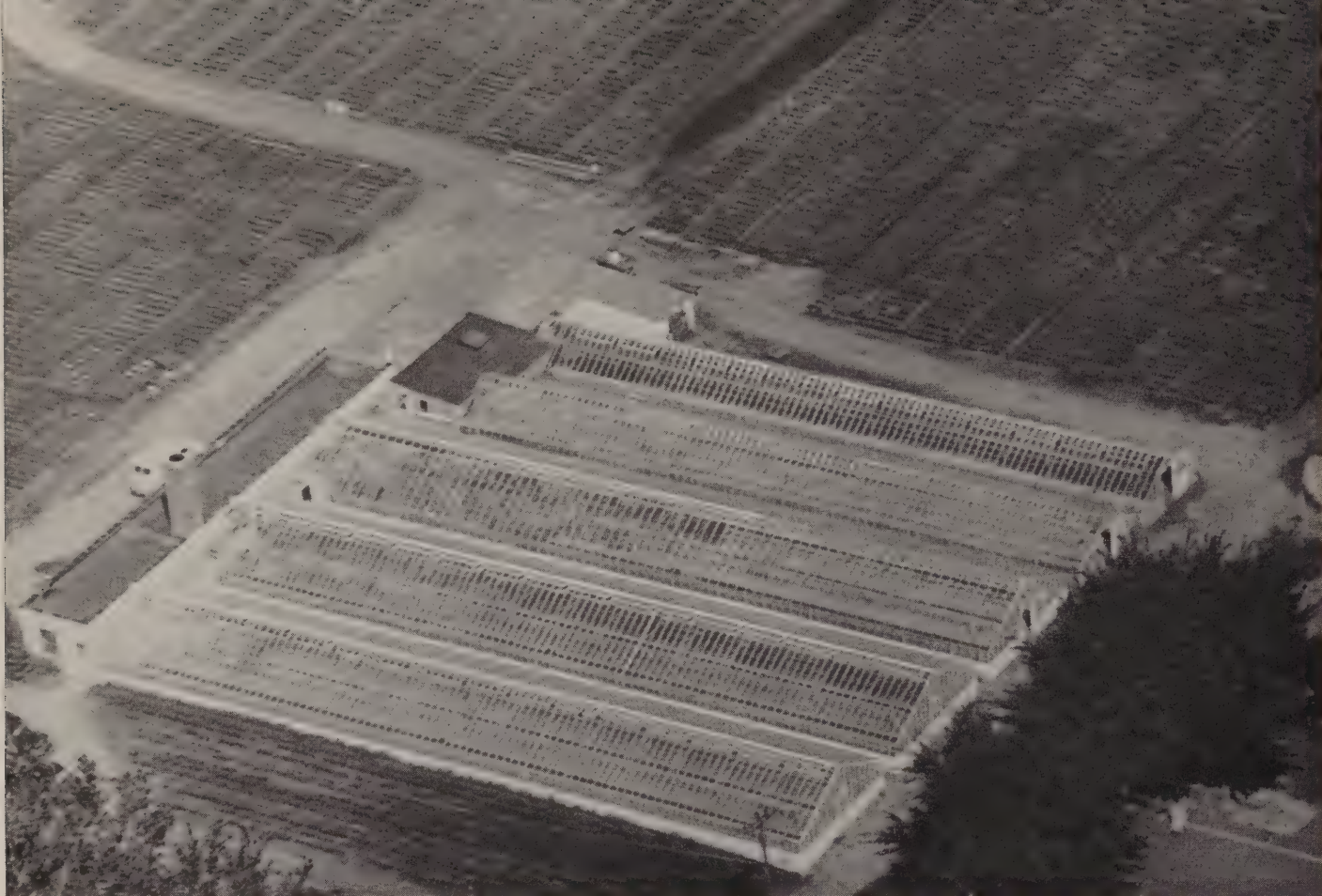
When the first light frosts of fall have made your window-boxes unsightly by killing the tender plants in them, you can enjoy the full glory of Mums. These dreary-looking window-boxes can be transformed into a fairyland of color for two or three weeks by simply transplanting Mums from your garden into them. Select low, compact plants in full bud and bloom, dig them carefully and plant directly in the box.

THE ABC'S OF MUM CULTURE

- A — Appleblossom-time is the beginning of Mum planting time.
- B — Buy "Better-Grown and Sure-to-Bloom" plants.
- C — Close planting will make spindly plants. Give them 18 inches each way.
- D — D.D.T. dust or spray will keep bugs off.
- E — Early varieties give the most and best bloom in the North.
- F — Foliar nematode can be controlled with Parathion.
- G — Give your Mums plenty of water during the summer.
- H — Hoe around the plants regularly to aerate the soil and keep weeds down.
- I — Ice over the crowns during the winter is often fatal.
- J — July 30 should be the date of the last pinch.
- K — Kill all major Mum insects with Malathion and D.D.T.
- L — Light will determine blooming date.
- M — Mums from Minnesota can't be beat.
- N — Nicotine Sulfate (Black Leaf 40) will kill aphids.
- O — Overhead watering is not recommended.
- P — Pinching keeps plants sturdy and low.
- Q — Quality means Mums from Minnesota.
- R — Reap armloads of flowers from a few well-grown plants.
- S — Shade will make plants grow taller and bloom much later.
- T — Transplant and divide old clumps each spring.
- U — Use peat to improve your soil.
- V — Valuable information can be obtained from our catalog.
- W — Winter cover with marsh hay or porous material.
- X — X-perts say diseased stock should be burned.
- Y — You will enjoy our Kodachrome slides on Mums.
- Z — Zig-zag planting is more attractive than a single row of Mums.



Visitors strolling through our Test Gardens



AN AIRVIEW OF THE HOME OF MUMS FROM MINNESOTA

ALL-PURPOSE HOE

THE BEST GARDEN TOOL EVER INVENTED



We have never sold tools but we can't resist offering this one manufactured of the finest materials right here in Faribault. We have used it for years in our own gardens, and it is positively the finest, easiest to use tool we have ever seen. Without stooping you get in between, around, alongside your MUM plants. The hoe goes where you want it to go. It is sharp—cuts easily. Pick off one weed or a lot of them. Very light. Something you ladies will appreciate—your husbands will, too.



IN BETWEEN



ALONG SIDE



AROUND

PRICE

ONLY \$1.95

POSTPAID IN U. S. A.

Only This Hoe Will Do These Tricks—Just Try One

WHAT USERS SAY:

Please send me one of your All-Purpose Hoes, I have one and like it very much. It is in great demand in the neighborhood.—Mrs. R.B.

De Forest, Wis.

Your All-Purpose Hoe is wonderful. So many neighbors have borrowed it. I am debating whether to tactfully suggest that they send for your catalog and get their own or just buy myself a new one in self defense . . . and keep it under lock and key.—Mrs. W.E.J.

Birmingham, Mich.

I ordered one of the hoes from you two years ago. I just can't use any other. I am getting this one for a gift. It is wonderful for flowers and also in the garden.—Mrs. B.G.R.

Abingdon, Va.

The All-Purpose Hoe I purchased from you early in the spring is all your advertisement says . . . I love it.—Mrs. A.D.T.

Camden, N. Y.

The two hoes I ordered have arrived. I am so pleased with them. We have had this type hoe for many years but this new design really is an improvement over the original one . . . good as it is—E.C.

Crete, Ill.

This is a mighty fine hoe. We have two purchased from you and, believe me, they get good care.—G.S.B.

Iowa City, Iowa

Our Fall Mum Show

"The Mums are blooming" has become a long-awaited and familiar greeting to thousands of Mum-lovers here in Minnesota and throughout the United States. When the days cool down and the leaves begin to turn, thousands of people all over the country take their scheduled trip to Faribault to see the Mums in all their glory. They are never disappointed, for each year many new varieties have been perfected and placed on display. This year "the Mums were blooming" from September 14 to November 2, and 40,000 people joined us in enjoying this feast of flowers which is set up and maintained entirely for your pleasure and at no cost to you.

Here at The Lehman Gardens in Southern Minnesota you can see 100,000 Mum plants in our large, unprotected fields. During the late fall these fields are transformed into ribbons of colors and are a magnificent sight. However, it is not every year that we are favored with a late fall. To beat the elements, we have constructed ten very large beds in which we grow five plants each of over 500 varieties. These beds are protected and maintained through the entire show. Here you can see all varieties blooming side by side and can check heights, blooming dates, etc. Our very first varieties begin to bloom about mid-August. By mid-September a great many of the earlier kinds are in full bloom. Between September 25 and October 10 is usually when the flowers are at their best. We suggest that you come at the time you would want your Mums in full bloom and check the varieties that are in full bloom at that time. Also in these outdoor beds are many of our seedlings—the Mums of Tomorrow—in different stages of selection. Each

variety that is selected from a planting of seedlings is grown and tested for four or five seasons to be sure it is worthy of naming and introduction.

In case of bad weather (and we have it in Minnesota), we maintain a bounteous display of Mums in our five greenhouses. The first two greenhouses are replete with rows of tables running the full length of the buildings. On these are displayed thousands and thousands of beautiful Mum plants in every conceivable color. A sign advising "Don't Miss This!" directs one to the third greenhouse. Here, indeed, is a breathtaking sight! The entire greenhouse has been transformed into an outdoor living room. A graveled path winds its way around a pool with sprays of bubbling water and floating Mum blossoms, past huge beds of Mums of all colors to the east entrance where tall cornstalks surrounded with pumpkin give a festive autumn air to the scene. Placed at intervals along the garden path are gaily striped canvas-covered love seats where one may relax and enjoy the beauty of the place. Nearly 3000 Mums have been planted on the three levels. The effect is startling, for great care has been exercised in the blending of harmonizing colors. All varieties are labeled, and many folks come each fall to pick out their varieties for the next season.

No matter the day or the weather—any time between September 15 and November 1 is the time to come to see the Mums. The display is maintained entirely for your pleasure, and we hope you, too, can come when "the Mums are blooming."

KODACHROME SLIDES

We have a set of Kodachrome Slides of Mums that makes an excellent free program for garden clubs, flower societies, study groups or church organizations. We gladly lend them to any reliable group entirely free of charge. This set contains more than 100 35 mm. or 2-inch kodachrome slides, all about Mums. Pictures included are individual flowers, borders, garden and field scenes, and beautiful artistic arrangements—all in full color. A short descriptive text accompanies the slides, which makes the showing time about one hour. The organization using the pictures need only supply the screen and projector.

If your group would like these slides for a future program, write us at least 30 days in advance, specifying the date of your meeting, and, if possible, an alternate date. You will receive a confirmation of your reservation. The slides will be mailed to reach you ahead of your meeting. We ask that you return them promptly, so that the next group may get them on time. Labels and postage for returning them will be supplied by us.

We are sure that your organization would enjoy a program on Mums. For your reservation write to

E. C. LEHMAN, The Lehman Gardens, Faribault, Minn.

Here is what people who have seen the slides have told us:

Flat River, Mo. Thank you for the use of your Kodachrome slides. Your company should be congratulated upon making such material available. I used the slides for two different groups, and each lady was of the opinion that one could not sit through such a beautiful series of pictures and not receive an inspiration to plant more and better Mums.—Mrs. R.T.

Freeport, Ill. We wish to thank you for the use of your set of Kodachrome slides of Mums which were shown last evening. They are sure wonderful slides and our club members greatly enjoyed them from the many lovely comments that were expressed by them.—E.H.S.

Toronto, Ohio. Thank you for the use of your slides. Everyone exclaimed over the beauty of the flowers and we all wish to thank you for making it possible for us to have them to show. We hope we may be able to visit your gardens sometime.—Mrs. W.L.

PART OF OUR INDOOR SHOW



1932 - 1958

MUM CHATTER

It is with a feeling of gratitude that I greet you, our thousands of loyal friends and customers throughout the length and breadth of our wonderful country. Because of you and your generous patronage, we have experienced the biggest year we have had in point of plants produced and shipped and in the volume of total sales. We hope that our efforts in producing our Better-Grown and Sure-to-Bloom plants have given you much pleasure and that all our transactions have been satisfactory. We thank our many friends for their kind expressions of appreciation, which encourage us to do a better job.

The 1957 growing season in southern Minnesota was a very favorable one for flowers. We had abundant rains that were spaced about the right distance apart, and we experienced no destructive storms this past season. If we have any complaint at all, it is that the season was a bit too wet and it was somewhat hard to keep the fields and gardens perfectly clean of weeds. It was also difficult to keep a spray or dust on the plants because of the frequent rains.

The Mums came along wonderfully well, made good growth and came into bloom on schedule. Because of the wet weather throughout the summer and fall, many of our visitors had to brave rain and mud in order to get out into the fields to see the flowers. Nevertheless, our open house from mid-September until November 1 brought in many thousands of visitors who came to enjoy the flowers with us.

We had something new in our indoor show this year. Over a period of five weeks we had on constant display fifty or sixty arrangements made from Mums and other accessories. We had a very talented lady, Mrs. William Thorne from Minneapolis, make these arrangements that created much interest among the hundreds of bus-loads of garden clubbers who came to visit us during the blooming season.

Our fall show and open house has now become quite an event and is visited by an increasing number of people each year. Many of the folks drive several hundred miles and make the trip an annual event. We hope we will have the pleasure of meeting many of you here during this festival of flowers.

We are this year naming and introducing three excellent new varieties: **Princess Kay** of the Milky Way, named for the charming Minnesota Dairy Princess. This is an exceptionally early, pure white Mum. **Purple Heart** is an extremely large, quilled-petaled, grapejuice-purple. **Champagne** is one of the larger Mums of the English influence and could be described as ivory-pink. It is a delightful pastel that lends itself wonderfully well to arrangements.

In our planting of over 100,000 plants, the following varieties were outstandingly good and received the most comments from our many visitors. Perhaps the most talked-about new thing in our entire planting was the new rose-pink cushion developed by the University of Minnesota and named **Minnpink**. This is a glorious new introduction and should replace all other pink cushion varieties. Perhaps the most sensational Mum in our entire fields, gardens and show rooms this fall was **Bronze Giant** with its immense, 5 inch, flat disk-like flowers of burnished copper. **Bronze Pat**, **Champagne**, **Muriel Rice** and **Football Bronze** created a lot of attention because of their bright colors, large flowers and generous bloom. In the twenty-six years that we have been growing Mums, I have never seen finer **Avalanche** than we grew this year. There were magnificent flowers on the plants in the open fields, and many of them were used in bridal bouquets.

Grace Bradshaw, with its immense, 6 to 7-inch, pure white flowers, was a sensation. Wish it were a bit earlier with its bloom. **Hilite** impressed us as being perhaps the best large-flowered, early-blooming yellow for this section of the country. It is a seedling of **Lee Powell** and is a variety that we are very proud of. **Judy** and **Blanche Litwiller** were two of Dr. Kraus' tightly knit, large pink pompons that impressed us as being very desirable. **Gold Button**, **Lavender Button** and **Edna Rowley** are a trio of button pompons that furnished a lot of good material for arrangements. **Daisymum** was completely smothered with large, white daisy-like flowers. We also liked **Gold Daisy**. Although not so prolific as the white, still added variety because of its soft gold color. Again **Adorable** was by far the most popular early pink in our entire collection. We are truly proud of **Adorable**.

We sincerely hope that 1958 will be a wonderful gardening year for all of us.
E. C. Lehman

These reports on varieties and growing conditions will give you the Mum picture last fall:

Mrs. Jean Siena of Middletown, Conn., says: "The Mums I received last year were in excellent condition upon arrival—stood up through an unusually dry summer and a very wet and hurricane-plagued August. **Yellow Avalanche** did best—it bloomed first and lasted right up to frost, which came late for New England this year. **Betty** and **Patricia Lehman** did well too, as well as the others. I was very pleased with their progress and delighted with the beautiful color and texture of the flowers."

From the deep Southwest we had this comment of Mrs. W. B. Parrott of Albuquerque, N. M.: "**Lee Powell** continues to be very beautiful. **Malinda Brown** is taking the place but blooms too early here and is almost white. Everyone admires my Mums and I have many to give away. Your plants have always arrived in better condition than any others I receive. **Patricia Lehman** does well here. It starts in early as a buff and ends up late as a deep pink."

William Schroeder of Neenah, Wis., agrees that: "Your Mum Chatter in your catalog is so true. I had the very same results last year."

Closer to home and a repeat from last year's Mum Chatter is Mrs. C. J. Leasman, of Hector, Minn., who gives a few pointers: "The Lehman Mum plants wintered almost 100%—**Butterscotch**, **Reverence**, **George Luxton**, **Plainsman**, **White**

Cloud, **Muriel Rice**, etc., by mulching them a bit, then covering with corn stalks and then alfalfa hay. We grew over 300 Mums this year and among them were the three **Lehmans**, **Mojave Gold**, **Bronze Giant**, **Harvest Bronze**, **Crowning Glory**, **Evelyn Devaney** and some spoons. They have indeed been a joy, with every plant coming into full, abundant bloom. Visitors have come from far and near to enjoy them. Thank you, Lehman Gardens, for perfect Mum plants."

An admirer of large-flowered Mums is Mrs. Oscar Emond of Prairie du Sac, Wis.: "**Lady's Choice**, **Muriel Rice** and **Football Bronze** were outstanding. You sent me beautiful stock and I was very pleased with all of the Mums."

Alexandria, Minn., has a rabid group of Mum fans. Three good neighbors have observed the following: Mrs. R.D., "Your Minnesota Mums have been very outstanding in the garden this year. I am partial to your huge **Mojave Gold** blooms, the changeable quality of **Muriel Rice**, and the richness of **Purple Waters**. There were many more we enjoyed among the gorgeous bronzes, and they all had party dresses on to color their corner of the garden." Mrs. L. W. Meier says: "I'm pleased with the Mums I purchased—especially **Purple Waters**, **Adorable** and **New Drifted Snow**. They were really outstanding." Mrs. E. W. Rose: "I can truly say that **Mojave Gold** is one of the most exquisite Mums I have seen, and I wish to increase the size of my Mum garden by about twenty new varieties for the next year."

Another Mum watcher from Swatara Station, Penna., Mrs. I. D. Boyer, says: "I bought 13 Mums from you this year and I was so completely satisfied I had to let you know. I am rather curious to know the origin of the name **Lady's Choice**. If most of its admirers were women, it certainly is not the case here. Men were equally enthusiastic about it here. It was gorgeous, as was **Evelyn Devaney**, **Jewelstone**, **Muriel Rice**, and **Indian Red**. Truly they were all beautiful. I now have almost eighty types and colors."

A second repeat reporter is Mrs. M. Mickelson of Colfax, N. Dak.: "**Granny Lehman** steals the show in my garden. **Lavender Button** is just starting and looks to be a nice one. All your Mums that I get are tops, including **Mojave Gold**, **Butterscotch**, **Purple Waters** and many others."

Mrs. V. H. Burnette of Overland Park, Kans., has words about our catalog and her successes: "Do you still have a copy of your catalog that you could send me? I loaned my copy out to several friends, and I have just recently given it to a new home owner who will order Mums from you next spring. Another gardener in our area is interested in Mums but has not had much success with them. He has requested information on our Mums, and I should like him to see your catalog. Our Mums this year were very beautiful, particularly **Butterscotch**, **Patricia Lehman**, **Success** and **Purple Waters**. The **Julie B** Mums were exquisite. We had numerous compliments and many passersby would stop and remark about them. Next year we are going to order additional **Patricia Lehman** Mums because that color blends so beautifully with our house color and we also want more of the **Julie B** plants. We shall be looking forward eagerly to your new catalog."

A vote for **Daisymum** was received from Herbert H. Hadow of Milton, Wis.: "Last spring I ordered from you a plant of your new **Daisymum**. This was just excellent for me—one of my outstanding Mums. Was so pleased with it that I had to write and tell you so. It bloomed profusely, and I could use the blooms in so many ways in arrangements. For fear it might not winter over outside, I dug it up and am keeping it inside. **Julie B** also was excellent. A friend gave me **Ruby Breithaupt** and **Purple Waters** and I think they are both outstanding Mums"

Mrs. Elmer Turnberg of Granada, Minn., says: "**Crowning Glory** and **Football Bronze** were free plants last year and they are simply gorgeous this year. **Adorable** is loaded with adorable blossoms. Your Mums are superb."

In Washington, Mrs. G. A. Thomas of Chehalis mentions three Mums that did extra well for her: "I want to thank you very much for the grand plants you sent me last year. I had some very beautiful blossoms. Mums are my very favorite flower. **Evelyn Devaney** I like so well—**Mojave Gold** and **Butterscotch** were grand—in fact, I don't know which weren't. It is such a pleasure to do business with you."

Another booster of the Big Flower Collection was Mrs. W. R. Haller of De Pere, Wis.: "Of the large-flowered Mums that I received from you, **Butterscotch**, **Crowning Glory** and **Mojave Gold** were superlative and **Purple Waters** was a mass of blooms. I am looking forward to more varieties from you and I shall certainly recommend you to other gardening friends."

Ollie L. Kile of Galion, Ohio, also likes our Mums and like all has a few favorites: "Again it is a real joy to order plants from you, as they are the best and come in excellent condition. The blooms are always so beautiful, but **Apache's** firecracker-red quills topped our 200-variety garden last year. A Garden Club speaker took more than 25 different flowers to illustrate her talk. She especially liked **Patricia Lehman**, **Old Lavender**, **Lee Powell**, **Holiday**, **Masquerade** and **Crown Jewel**. 'This is heaven,' one of our garden visitors exclaimed, 'I'd like to stay here.' Thanks to you for the best in Mums."

Our ribbon winner this year is a ten-year veteran of growing our Mums. He certainly has hit the jackpot on awards. He is C. R. George, of Johnstown, Penna.: "Thought you might be interested in our first Garden Mum show. The plants that I received from you came through with flying colors. The following received first awards: **Butterscotch**, **Daisymum**, **Bronze Giant**, **Purple Spoon** and **Evelyn Devaney**. The last variety I believe is my favorite of all the Mums. It has such a nice pink color. This year I disbudded a lot and was surely surprised at the results that can be obtained. **Bronze Giant** and **Helen Bogue** over 5 inches across. The best bloom in the show was **Apache**—over 4½ inches—and it was surely a perfect bloom. Since the show was so early, we did not have any of the exhibition types, but if taken care of and disbudded I believe that we can really put on a show that will compare with the best. The average gardener is more interested if he knows that they are grown in the garden and he can grow them, whereas the large varieties must have lots of care if they are to give you blooms of show quality. The growing of these types follows naturally after some years of experience. One class which was for the introductions of 1956 and 1957 caused some interest and I won the first four awards as follows: **Bronze Giant**, **Helen Bogue**, **Adorable** and **Crowning Glory**—nice average for your introductions."

And we agree with Mrs. Robert S. Hart of Loudonville, N. Y., who writes: "Your very lovely **Patricia Lehman** has been reasonably hardy in our gardens for about eight years. We think there has never been a more beautiful Chrysanthemum."



ADORABLE. 75c each; 3 for \$2.00



NEW PAPER WHITE. 75c each; 3 for \$2.00



COMPANION. 60c each; 3 for \$1.50



EARLY HARVEST
50c each; 3 for \$1.25



VIOLET
50c each; 3 for \$1.25
DELIGHT. 60c each; 3 for \$1.50



COMPANION. 60c each; 3 for \$1.50



ROUGE CUSHION. 60c each; 3 for \$1.50

7
Earliest
MUMS

A selection of the very best of the very earliest flowering Mums. All begin blooming in late August and early September.

7 Sure-to-Bloom Plants

\$3.50

(1 of each pictured)





**1958
MUM
OF
THE
YEAR**

MINNPINK

75c each;
3 for \$2.00

A single plant of the sensational new cushion Mum developed by the University of Minnesota.

MINNPINK

FOR A MASS OF COLOR PLANT CUSHION MUMS

Their mound-like habit of growth resembles azaleas.
All early kinds.

Special Offer, 6 Colors

**RED
WHITE**

**YELLOW
PURPLE**

**BRONZE
PINK**

- | | | |
|-----------|--|----------------|
| 6 | Sure-to-Bloom Cushions
(1 of each color) | \$2.50 |
| 18 | Sure-to-Bloom Cushions
(3 of each color) | \$7.25 |
| 30 | Sure-to-Bloom Cushions
(5 of each color) | \$10.00 |



A Spectacular Planting of Cushion Mums